

2002 PRIMARY CARE, WIC & FIRST HEALTH CENTER OPENS

THE FIRST HEALTH CENTER OPENS IN ST. CHARLES PARISH SERVING THE RURAL AND LOWER INCOME COMMUNITY. WIC AND PRIMARY CARE FOR ADULTS AND CHILDREN ARE ESTABLISHED TO BEGIN THE JOURNEY OF A HEALTH CARE COMPANY THAT MEETS THE COMMUNITIES NEEDS

2003 BEHAVIORAL HEALTH EST.

AHL ADDS A ROBUST BEHAVIORAL HEALTH DEPT. TO PAIR MENTAL HEALTH WITH PHYSICAL HEALTH CREATING A NETWORK OF SERVICES AND HEALTH CENTERS

2008 DENTAL SERVICES

AHL EXPANDS SERVICES TO OFFER DENTAL SERVICES AT OUR LULING HEALTH CENTER LOCATION

2009 SCHOOL-BASED HEALTH CENTERS EST.

AHL ADDS SCHOOL-BASED HEALTH CENTERS BEGINNING W/ ALBERT CAMMON, HELPING SERVE CHILDREN AND YOUNG ADULTS WITH THEIR HEALTHCARE NEEDS AT SCHOOL. NORCO HEALTH CENTER BREAKS GROUND

2013 MARKETING / OUTREACH / MATERNAL CARE

AHL ADDS A ROBUST MARKETING DEPARTMENT BUILDING COMMUNITY RAPPORT & BRAND RECOGNITION AND CARE COORDINATION SERVICES FOR EXPECTING MOTHERS

2014 POPULATION HEALTH

AHL ADDS HEALTH OPTIMUM QUALITY TRACKING & SURVEILLANCES TO ENSURE HEALTH CARE GAP CLOSURES

2002 - 2016 10 HEALTH CENTERS ADDED

AHL EXPANDS TO 10 HEALTH CENTERS ACROSS SOUTHEAST LOUISIANA

2018 HEALTH COACH SERVICES

AHL ADDS HEALTH COACH SERVICES TO IT'S LIST HELPING DIABETIC AND HIGH BLOOD PRESSURE PATIENTS CREATE DIET PLANS TO PAIR WITH MEDICATION

2019 PHARMACY SERVICE ADDED

AHL ADDS PHARMACY SERVICES FOR IT'S PATIENTS INCLUDING FREE DELIVERY

2020 SERVICE EXPANSIONS

BEHAVIORAL HEALTH EXPANDS, INFECTIOUS DISEASE & MAT PROGRAM ADDED, HRSA QUALITY RECOGNITION AWARD

2023 AHL RECEIVED AWARDS

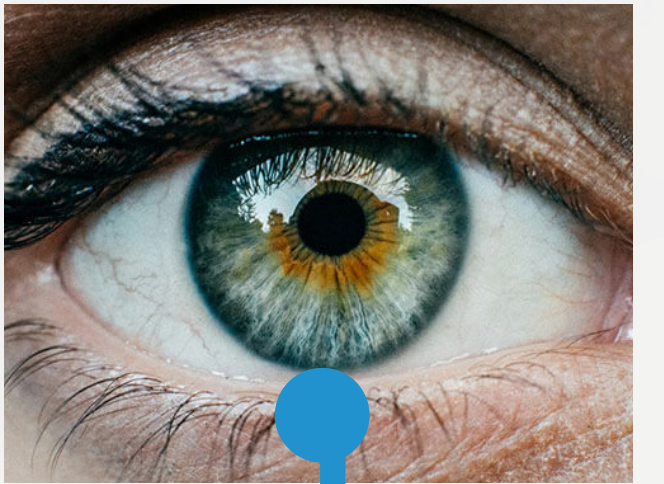
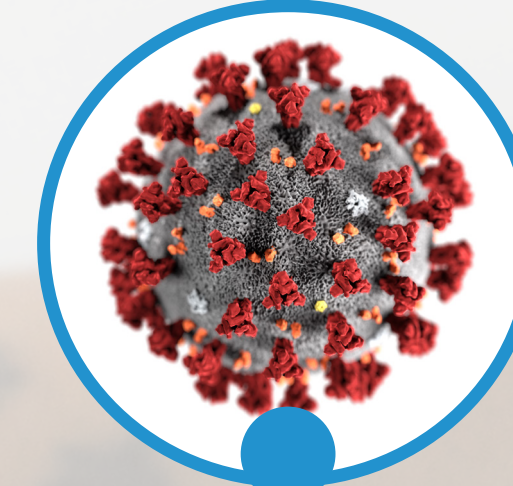
AHL RECEIVES PROCLAMATION AWARDS DURING NATIONAL HEALTH CENTER WEEK

2024 NEW FACILITY & TELEMED EXPANDS

WOODWORTH HEALTH CENTER GETS AN UPGRADE WITH A NEW BUILDING. SCHOOL-BASED HEALTH CENTERS RECEIVE USDA TELEHEALTH GRANT TO EXTEND SERVICES INTO RURAL AREAS

2025 OPTOMETRY

AHL EXPANDS SERVICES TO OFFER OPTOMETRY MERGING WITH WEST JEFF MEDICAL CENTER



PAST PRESENT FUTURE